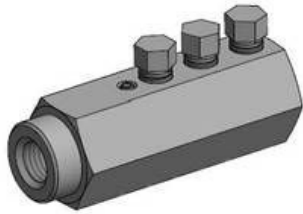


## Coupling B15 - B500



Coupler B15 / B500 for connections between BETOMAX® 15 (B15) tie rods and Ø14mm rebar steel.

### Technical data

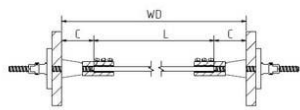
Hexagonal bar AF36, 11 SNm 30

3 x shear bolt M12, AF13 (torque approx. 140 Nm)

Working load max. 60 kN

### Application

The coupler is mainly used to reduce the tie rod length over large spans, and replace with Ø14mm rebar steel.



Article description	Title of variant	Concrete cover mm	Packaging piece/ metre/ metre by the metre/ bucket/ bag/ bundle/ box/ can	Weight kg/piece	Weight kg/1000 pieces
20450514	Coupling B 15 / B 500 for connecting structural steel Ø 14 with B 15 anchor rods		1 piece	0,740	
60526950	Cone EX 26/50	50	250 pieces/bag		32
60126200	Cone IN 26	25	250 pieces/bag		13,500